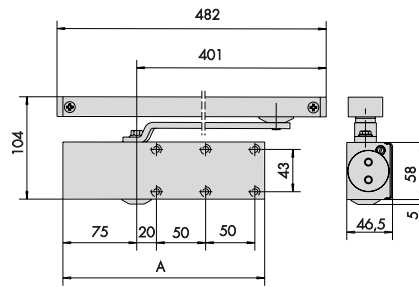


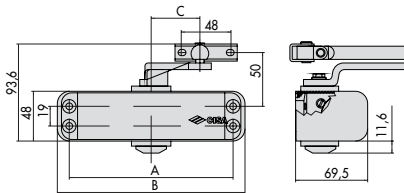
60250, 60251, 60252, 60260, 60261, 60262



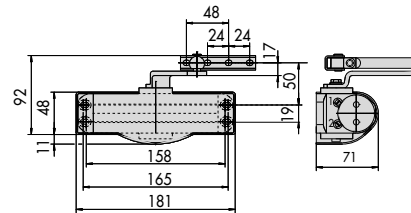
	A		A
1.60517.03	205	1.60537.03	205
1.60517.04	225	1.60537.04	225
1.60517.05	225	1.60537.05	225
1.60518.03	205	1.60557.03	225
1.60518.04	225	1.60557.05	225
1.60518.05	225	1.60538.03	225
1.60527.03	205	1.60538.05	225
1.60527.04	225	1.60567.03	225
1.60527.05	225	1.60567.05	225
1.60528.03	205	1.60568.03	225
1.60528.04	225	1.60568.05	225
1.60528.05	225	1.60577.03	225
		1.60577.05	225

1

4



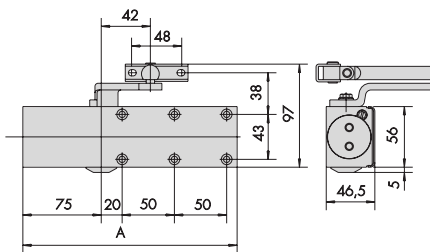
	A	B	C
1.60410.04	198	221	54
1.60411.04	198	221	54
1.60410.05	198	221	54
1.60411.05	198	221	54



71410, 71411, 71412

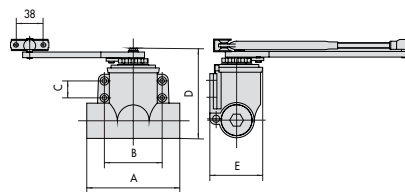
2

5



	A		A		A
1.60510.02	205	1.60520.02	205	1.60551.03	225
1.60510.03	205	1.60520.03	205	1.60551.05	225
1.60510.04	225	1.60520.04	225	1.60560.03	225
1.60510.05	225	1.60520.05	225	1.60560.05	225
1.60510.13	205	1.60521.02	205	1.60561.03	225
1.60510.14	225	1.60521.03	205	1.60561.05	225
1.60511.02	205	1.60521.04	225	1.60570.03	225
1.60511.03	205	1.60521.05	225	1.60570.05	225
1.60511.04	225	1.60530.02	205		
1.60511.05	225	1.60530.03	205		
1.60511.13	205	1.60530.04	225		
1.60511.14	225	1.60530.05	225		
		1.60550.03	225		
		1.60550.05	225		

3



	A	B	C	D	E
1.60130.01	132	75,5	19	144	68
1.60131.01	132	75,5	19	144	68
1.60140.02	137	82	24	124	73
1.60141.02	137	82	24	124	73
1.60150.03	147	92	29	140	81
1.60151.03	147	92	29	140	81
1.60160.04	150	105	31	156	96
1.60161.04	150	105	31	156	96

6