




## DOOR CLOSERS

Door closers series 601/T .....	467
Door closers series 704.....	468
Door closers series 714.....	469
Door closers series 604.....	470
Door closers series 605.....	471
Door closers series 602.....	474
Accessories for door closers series 601 .....	475
Accessories for door closers series 604, 605, 704, 714 .....	476
Accessories for door closers series 602 .....	480
Dimentional drawings	





**Technical features:**

- Solid cast iron body
- Steel arm, with or without hold open device

**ADJUSTMENTS:**

- Closing speed adjusting valve

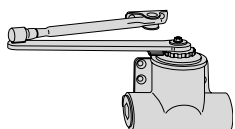
**Supplied as standard:**

- Fixing screws
- Installation template

**Finishes:**

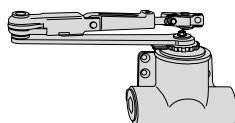
- The required finish must always be specified in the order
- Finishes available at no extra charge:
  - aluminium colour (fin. 97)
  - gold colour (fin. 98)

Type	Description	Closing force	Max. door width	Max. door weight	Unit weight 	Pieces 	ITEM			
							Type	Dim.	Hand	Fin. Pers. Spec.



• Arm without hold-open facility

1	750	30	2,392	2	1 60130 01 0 98
2	830	45	3,080	2	1 60140 02 0 98
3	930	60	3,662	2	1 60150 03 0 98
4	1030	80	4,900	2	1 60160 04 0 98



• Arm with hold-open facility

1	750	30	2,480	2	1 60131 01 0 98
2	830	45	3,205	2	1 60141 02 0 98
3	930	60	3,705	2	1 60151 03 0 98
4	1030	80	5,025	2	1 60161 04 0 98



**Technical features:**

- Aluminium alloy monoblock body
- Steel arm with or without adjustable hold open catch mechanism
- Special oil bath steel spring
- Regulating valve with thermostatic device
- Adjustments
  - Closing force 2-3-4
  - Speed of closing
  - Strength of final slam
  - Regulation of door hold open catch mechanism (series 71441).

**Supplied as standard:**

- Supplied as standard
- Fixing screws
- Template and assembly instructions.

**Finishes:**

- Always specify the finish on the orders
- Possible finishes at no extra cost
  - CHAMPAGNE colour (fin. 87)
  - DARK BROWN colour (fin. 88)
  - ALUMINIUM colour (fin. 97)
  - DARK BRONZE colour (fin. 99)
- Possible finishes at an extra cost
  - RED colour (fin. 41)
  - YELLOW colour (fin. 42)
  - GREEN colour (fin. 43)
  - BLACK colour (fin. 44)
  - WHITE colour (fin. 45)

**VALUE**

Type	Description	Closing force	Max. door width	Max. door weight	Unit weight Pieces	ITEM				
						Type	Dim.	Hand	Fin.	Pers.
	• Arm without hold-open facility	2-4	850÷1100	1,800	1	1	70410	03	0	97
	• Arm with hold-open facility	2-4	850÷1100	2,100	1	1	70411	03	0	97
	• Arm with built-in 90° hold-open facility	2-4	850÷1100	1,800	1	1	70412	03	0	97



**Technical features:**

- Aluminium alloy monoblock body
- Nylon case cover.
- Steel arm with or without adjustable hold open catch mechanism
- Special oil bath steel spring
- Regulating valve with thermostatic device
- Adjustments
- Closing force 2-3-4
- Speed of closing
- Strength of final slam
- Regulation of door hold open catch mechanism (series 71441).

**Supplied as standard:**

- Fixing screws
- Template and assembly instructions.

**Finishes:**

- Always specify the finish on the orders
- Possible finishes at no extra cost  
 CHAMPAGNE colour (fin. 87)  
 DARK BROWN colour (fin. 88)  
 ALUMINIUM colour (fin. 97)  
 DARK BRONZE colour (fin. 99)
- Possible finishes at an extra cost  
 RED colour (fin. 41)  
 YELLOW colour (fin. 42)  
 GREEN colour (fin. 43)  
 BLACK colour (fin. 44)  
 WHITE colour (fin. 45)

**SMART**

Type	Description	Closing force	Max. door width	Max. door weight	Unit weight 	Pieces 	ITEM				
							Type	Dim. Hand	Fin.	Per. Spec.	
	• Arm without hold-open facility	2÷4	850÷1100		1,800	1	1	71410	03	0 97	
	• Arm with hold-open facility	2÷4	850÷1100		2,100	1	1	71411	03	0 97	
	• Arm with built-in 90° hold-open facility	2÷4	850÷1100		1,800	1	1	71412	03	0 97	



**Technical features:**

- Solid aluminium alloy body
- Steel arm, with or without hold-open device
- Nylon cover
- ADJUSTMENTS:
  - Closing speed adjusting valve



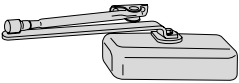
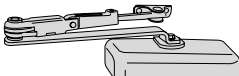
**Supplied as standard:**


- Fixing screws
- Installation template

**Finishes:**

- The required finish must always be specified in the order
- Finishes available at:
  - champagne colour (fin. 87)
  - dark brown colour (fin. 88)
  - aluminium colour (fin. 97)

- dark bronze colour (fin. 99)
- Finishes available:
  - red (fin. 41)
  - yellow (fin. 42)|green (fin. 43)
  - black (fin. 44)|white (fin. 45)

Type	Description	Closing force	Max. door width	Max. door weight	 Unit weight	 Pieces	ITEM				
							Type	Dim.	Hand	Fin.	Pers. Spec.
	• Arm without hold-open facility	4	1250	100	2,100	1	1	60410	04	0	97
		5	1400	150	2,100	1	1	60410	05	0	97
	• Arm with hold-open facility	4	1250	100	2,300	1	1	60411	04	0	97
		5	1400	150	2,300	1	1	60411	05	0	97



**Technical features:**




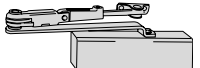

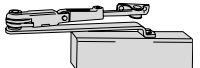


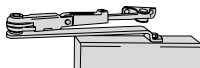
- Solid aluminium alloy body
- Steel arm, with or without hold-open device
- Pressure relief valve
- **ADJUSTMENTS:**
  - Closing speed adjusting valve

**Supplied as standard:**

- Fixing screws
- Installation template

**Finishes:**

- The required finish must always be specified in the order
- Finishes available at no extra charge:
  - champagne colour (fin. 87)
  - dark brown colour (fin. 88)
  - aluminium colour (fin. 97)
- Finishes available at an extra charge:
  - dark bronze colour (fin. 99)
  - red (fin. 41)
  - yellow (fin. 42)
  - green (fin. 43)
  - black (fin. 44)
  - white (fin. 45)

Type	Description	Closing force	Max. door width	Max. door weight	Unit weight 	Pieces 	ITEM				
							Type	Dim.	Hand	Fin.	Parts
	• Arm without hold-open facility	2	950	60	2,100	1	1	60510	02	0	97
		3	1100	80	2,100	1	1	60510	03	0	97
		4	1250	100	2,300	1	1	60510	04	0	97
		5	1400	150	2,300	1	1	60510	05	0	97
	• Arm with hold-open facility	2	950	60	2,300	1	1	60511	02	0	97
		3	1100	80	2,300	1	1	60511	03	0	97
		4	1250	100	2,500	1	1	60511	04	0	97
		5	1400	150	2,500	1	1	60511	05	0	97
	• MULTIFORCE VERSION • Arm without hold-open facility	2 ÷ 4	950÷1250	60÷100	2,100	1	1	60510	13	0	97
		3 ÷ 5	1100÷1400	80÷150	2,300	1	1	60510	14	0	97
	• MULTIFORCE VERSION • Arm with hold-open facility	2 ÷ 4	950÷1250	60÷100	2,300	1	1	60511	13	0	97
		3 ÷ 5	1100÷1400	80÷150	2,500	1	1	60511	14	0	97
	• FIRE DOOR VERSION • DIN standard (18263 Z TEIL II) • Arm without hold-open facility	2	750	40	2,100	1	1	60515	02	0	97
		3	905	80	2,100	1	1	60515	03	0	97
		4	1125	120	2,300	1	1	60515	04	0	97
		5	1280	160	2,300	1	1	60515	05	0	97
	• Adjustable backcheck closer • Arm without hold-open facility	2	950	60	2,300	1	1	60520	02	0	97
		3	1100	80	2,300	1	1	60520	03	0	97
		4	1250	100	2,500	1	1	60520	04	0	97
		5	1400	150	2,500	1	1	60520	05	0	97
	• Adjustable backcheck closer • Arm with hold-open facility	2	950	60	2,500	1	1	60521	02	0	97
		3	1100	80	2,500	1	1	60521	03	0	97
		4	1250	100	2,700	1	1	60521	04	0	97
		5	1400	150	2,700	1	1	60521	05	0	97

Type	Description	Closing force	Max. door width	Max. door weight	Unit weight Pieces	ITEM					
						Type	Dim.	Hand	Fin.	Pers.	Spec.
	<ul style="list-style-type: none"> <li>Adjustable delayed action closer</li> <li>Arm without hold-open facility</li> </ul>	2	950	60	2,300	1	1	60530	02	0	97
		3	1100	80	2,300	1	1	60530	03	0	97
		4	1250	100	2,500	1	1	60530	04	0	97
		5	1400	150	2,500	1	1	60530	05	0	97
	<ul style="list-style-type: none"> <li>ADJUSTABLE FORCE VERSION</li> <li>Arm without hold-open facility</li> </ul>	2 ÷ 4	950÷1250	60÷100	2,500	1	1	60550	03	0	97
		3 ÷ 5	1100÷1400	100÷150	2,500	1	1	60550	05	0	97
	<ul style="list-style-type: none"> <li>ADJUSTABLE FORCE VERSION</li> <li>Arm with hold-open facility</li> </ul>	2 ÷ 4	950÷1250	60÷100	2,700	1	1	60551	03	0	97
		3 ÷ 5	1100÷1400	100÷150	2,700	1	1	60551	05	0	97
	<ul style="list-style-type: none"> <li>ADJUSTABLE FORCE VERSION FOR FIRE DOORS</li> <li>DIN standards(18263 Z TEIL II)</li> <li>Arm without hold-open facility</li> </ul>	2 ÷ 4	750÷1125	40÷120	2,500	1	1	60555	03	0	97
		4 ÷ 5	1125÷1280	120÷160	2,500	1	1	60555	05	0	97
	<ul style="list-style-type: none"> <li>ADJUSTABLE FORCE VERSION</li> <li>Adjustable backcheck closer</li> <li>Arm without hold-open facility</li> </ul>	2 ÷ 4	950÷1250	60÷100	2,500	1	1	60560	03	0	97
		4 ÷ 5	1100÷1400	100÷150	2,500	1	1	60560	05	0	97
	<ul style="list-style-type: none"> <li>ADJUSTABLE FORCE VERSION</li> <li>Adjustable backcheck closer</li> <li>Arm with hold-open facility</li> </ul>	2 ÷ 4	950÷1250	60÷100	2,700	1	1	60561	03	0	97
		4 ÷ 5	1100÷1400	100÷150	2,700	1	1	60561	05	0	97
	<ul style="list-style-type: none"> <li>ADJUSTABLE FORCE VERSION</li> <li>Adjustable delayed action closer</li> <li>Arm without hold-open facility</li> </ul>	2 ÷ 4	950÷1250	60÷100	2,500	1	1	60570	03	0	97
		4 ÷ 5	1100÷1400	100÷150	2,500	1	1	60570	05	0	97

Type	Description	Closing force	Max. door width	Max. door weight	Unit weight Pieces	ITEM					
						Type	Dim.	Hand	Fin.	Pers. Spec.	
	• Arm without hold-open facility	3	950	60	2,600	1	1	60517	03	0	97
		4	1100	80	2,700	1	1	60517	04	0	97
		5	1250	100	2,700	1	1	60517	05	0	97
	• Arm with hold-open facility	3	950	60	2,800	1	1	60518	03	0	97
		4	1100	80	2,900	1	1	60518	04	0	97
		5	1250	100	2,900	1	1	60518	05	0	97
	• Adjustable backcheck closer • Arm without hold-open facility	3	950	60	2,600	1	1	60527	03	0	97
		4	1100	80	2,700	1	1	60527	04	0	97
		5	1250	100	2,700	1	1	60527	05	0	97
	• Adjustable backcheck closer • Arm with hold-open facility	3	950	60	2,800	1	1	60528	03	0	97
		4	1100	80	2,900	1	1	60528	04	0	97
		5	1250	100	2,900	1	1	60528	05	0	97
	• Adjustable delayed action closer • Arm without hold-open facility	3	950	60	2,600	1	1	60537	03	0	97
		4	1100	80	2,700	1	1	60537	04	0	97
		5	1250	100	2,700	1	1	60537	05	0	97
	• ADJUSTABLE FORCE VERSION • Arm without hold-open facility	2 ÷ 4	÷1100	÷80	2,800	1	1	60557	03	0	97
		4 ÷ 5	1100÷1250	80÷100	2,800	1	1	60557	05	0	97
	• ADJUSTABLE FORCE VERSION • Arm with hold-open facility	2 ÷ 4	÷1100	÷80	3,000	1	1	60558	03	0	97
		4 ÷ 5	1100÷1250	80÷100	3,000	1	1	60558	05	0	97
	• ADJUSTABLE FORCE VERSION • Adjustable delayed action closer • Arm without hold-open facility	2 ÷ 4	÷1100	÷80	2,800	1	1	60567	03	0	97
		4 ÷ 5	1100÷1250	80÷100	2,800	1	1	60567	05	0	97
	• ADJUSTABLE FORCE VERSION • Adjustable delayed action closer • Arm with hold-open facility	2 ÷ 4	÷1100	÷80	3,000	1	1	60568	03	0	97
		4 ÷ 5	1100÷1250	80÷100	3,000	1	1	60568	05	0	97
	• ADJUSTABLE FORCE VERSION • Adjustable delayed action closer • Arm without hold-open facility	2 ÷ 4	÷1100	÷80	2,800	1	1	60577	03	0	97
		4 ÷ 5	1100÷1250	80÷100	2,800	1	1	60577	05	0	97



**Technical features:**

- Cast iron body
- Hardened steel camshaft
- Pressure relief valve
- ADJUSTMENTS:  
Closing speed adjusting valve  
- Final slam adjusting valve

**Supplied as standard:**

- Steel wall case

**On request:**

- Covering plate item 1.07123.00.0
- OPTIONS (see relevant Catalogue section):  
- Personalized covering plate  
- Special camshaft  
- Hinge mechanism, without steel box

Type	Description	Stand open	Max. door weight	Max. door width	Unit weight	Pieces	ITEM				
							Type	Dim.	Hand	Fin.	Pers. Spec.
		100	1000	6,580	1	1	60250	00	0		
		90	100	1000	4,087	1	1	60251	00	0	
		105	100	1000	6,580	1	1	60252	00	0	
		200	1200	6,680	1	1	60260	00	0		
		90	200	1200	4,000	1	1	60261	00	0	
		105	200	1200	6,580	1	1	60262	00	0	

**Finishes:**

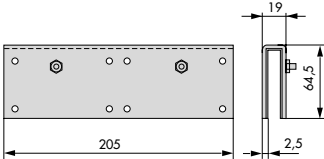
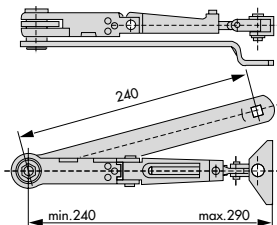
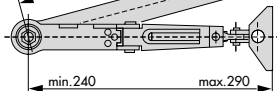

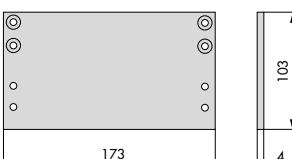
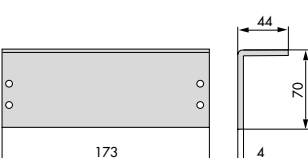
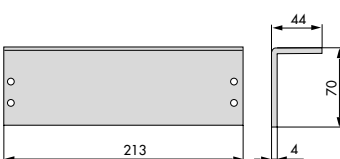
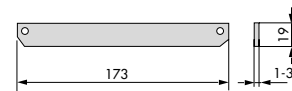
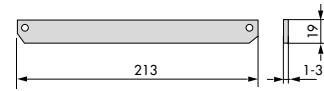
- The required finish must always be specified in the order (where necessary)
- Finishes available at no extra charge:
  - aluminium colour (fin. 97)
  - gold colour (fin. 98)
  - dark bronze colour (fin. 99)

Type	Description	For series/item	L	Unit weight Kg	Pieces	ITEM			
						Type	Dim. Hand	Fin.	Per. Spec.
	• ABS cover	60170, 60171,	143,0	0,100	1	1	06111	11	0 97
		60180, 60181,	156,0	0,120	1	1	06111	12	0 97
		60190, 60191	173,0	0,130	1	1	06111	13	0 97
	• Special steel spring	60130, 60131,	49,0	0,250	1	1	07101	01	0
		60140, 60141,	55,0	0,320	1	1	07102	02	0
		60150, 60151,	61,0	0,440	1	1	07103	03	0
		60160, 60161,	74,0	0,780	1	1	07104	04	0
		60170, 60171,	54,0	0,230	1	1	07105	01	0
		60180, 60181,	64,0	0,390	1	1	07106	02	0
		60190, 60191	70,0	0,480	1	1	07107	03	0
	• Steel arm without hold-open facility	60130, 60170	200,0	0,420	1	1	07132	00	0 97
		60140, 60150, 60160, 60180, 60190	240,0	0,475	1	1	07134	00	0 97
	• Steel arm with hold-open facility	60131, 60171	200,0	0,515	1	1	07133	00	0 97
		60141, 60151, 60161, 60181, 60191	240,0	0,595	1	1	07135	00	0 97

**Finishes:**

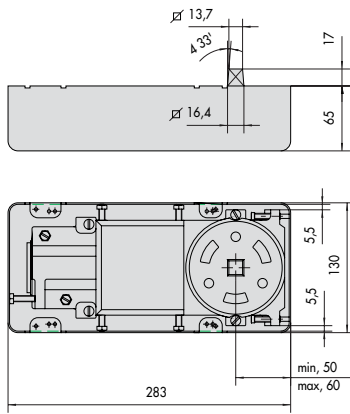
- The required finish must always be specified in the order (where necessary)
- Finishes available at no extra charge:
  - champagne colour (fin. 87)
  - dark brown colour (fin. 88)
  - aluminium colour (fin. 97)
  - dark bronze colour (fin. 99)
- Finishes available at an extra charge:
  - red (fin. 41)
  - yellow (fin. 42)
  - green (fin. 43)
  - black (fin. 44)
  - white (fin. 45)

Type	Description	Unit weight	Pieces	ITEM			
				Type	Dim.	Hand	Fin. Pers. Spec.
	• Steel hinge plate	0,080	1	1	07140	00	0 97
	• Parallel arm steel bracket	0,230	1	1	07141	00	0 97
	• Door closer steel backplate	0,600	1	1	07142	00	0 97
	• Door closer steel angle bracket	0,600	1	1	07143	00	0 97
	• Set of nylon spacers: 1 3 mm. piece 2 1 mm.pieces	0,030	1	1	07144	00	0 97
	• Steel door closer backplate	0,400	1	1	07145	00	0 97

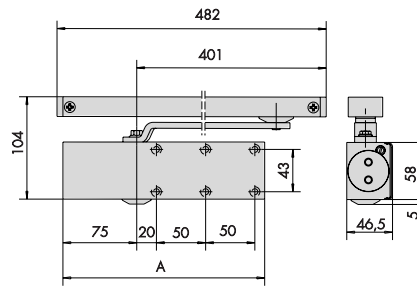
Type	Description	Unit weight 	Pieces 	ITEM			
				Type	Dim.	Hand	Fin. Pers. Spec.
	<ul style="list-style-type: none"> <li>• Steel backplate for glass doors</li> </ul>	0,600	1	1	07146	00	0 97
	<ul style="list-style-type: none"> <li>• Steel arm with hold-open facility and fuse, for fire doors</li> <li>• For door closers series 605 force 2 and 3</li> </ul>	0,700	1	1	07147	00	0 97
	<ul style="list-style-type: none"> <li>• Steel arm with hold-open facility and fuse, for fire doors</li> <li>• For door closers series 604 e 605 force 4 and 5</li> </ul>	0,700	1	1	07147	01	0 97
	<ul style="list-style-type: none"> <li>• Steel door closer backplate</li> <li>• For door closers series 604 force 4 and 5</li> </ul>	0,600	1	1	07148	01	0 97
	<ul style="list-style-type: none"> <li>• Steel door closer backplate</li> <li>• For door closers series 704, 714</li> </ul>	0,500	1	1	07148	00	0 97
	<ul style="list-style-type: none"> <li>• Door closer steel angle backplate</li> <li>• For door closers series 704, 714</li> </ul>	0,500	1	1	07149	00	0 97
	<ul style="list-style-type: none"> <li>• Door closer steel angle backplate</li> <li>• For door closers series 604 force 4 and 5</li> </ul>	0,600	1	1	07149	01	0 97
	<ul style="list-style-type: none"> <li>• Set of nylon spacers:</li> <li>1 pc. of 3 mm. thickness</li> <li>2 pcs. of 1 mm. thickness</li> <li>• For door closers series 704, 714</li> </ul>	0,030	1	1	07150	00	0
	<ul style="list-style-type: none"> <li>• Set of nylon spacers:</li> <li>1 pc. of 3 mm. thickness</li> <li>2 pcs. of 1 mm. thickness</li> <li>• For door closers series 604 force 4 and 5</li> </ul>	0,030	1	1	07150	01	0

Type	Description	Unit weight Kg	Pieces	ITEM				
				Type	Dim.	Hand	Fin.	Pers.
	<ul style="list-style-type: none"> <li>Steel arm without hold-open facility</li> <li>Series 704, 714: force 3 and 4</li> <li>Series 605: all force levels</li> </ul>	0,460	1	1	07151	00	0	97
	<ul style="list-style-type: none"> <li>Steel arm without hold-open facility</li> <li>For door closers series 605 force 2 and 3</li> </ul>	0,460	1	1	07151	01	0	97
	<ul style="list-style-type: none"> <li>Steel arm without hold-open facility</li> <li>For door closers series 714</li> </ul>	0,460	1	1	07151	15	0	97
	<ul style="list-style-type: none"> <li>Steel arm with hold-open facility</li> <li>For door closers series 605 force 2 and 3</li> </ul>	0,700	1	1	07152	00	0	97
	<ul style="list-style-type: none"> <li>Steel arm with hold-open facility</li> <li>For door closers series force 4 and 5</li> </ul>	0,800	1	1	07152	01	0	97
	<ul style="list-style-type: none"> <li>Steel arm with disconnectable hold-open device</li> <li>For door closers series 605 force 2 and 3</li> </ul>	0,800	1	1	07152	10	0	97
	<ul style="list-style-type: none"> <li>Steel arm with disconnectable hold-open device</li> <li>For door closers series 604 and 605 force 4 and 5</li> </ul>	0,900	1	1	07152	11	0	97
	<ul style="list-style-type: none"> <li>Steel arm with disconnectable hold-open device</li> <li>For door closers series 714</li> </ul>	0,900	1	1	07152	15	0	97
	<ul style="list-style-type: none"> <li>DIN compliant backplate for door closers series 605 force 2 and 3</li> </ul>	0,400	1	1	07153	00	0	97
	<ul style="list-style-type: none"> <li>DIN compliant backplate for door closers series 605 force 4 and 5</li> </ul>	0,400	1	1	07153	01	0	97
	<ul style="list-style-type: none"> <li>Steel sliding arm with aluminium guide</li> <li>For door closers series 604 and 605</li> </ul>	0,700	1	1	07154	00	0	97
	<ul style="list-style-type: none"> <li>Steel sliding arm with aluminium guide</li> <li>For door closers series 604 and 605</li> </ul>	0,800	1	1	07154	10	0	97
	<ul style="list-style-type: none"> <li>Fuse for arms series 07147</li> </ul>	0,020	1	1	07155	00	0	

Type	Description	For series/item	Unit weight Pieces	ITEM			
				Type	Dim.	Hand	Fin.
	<ul style="list-style-type: none"> <li>• Bottom brass strap for swinging doors</li> <li>• AVAILABLE FINISHES: -chrome (Fin. 18)</li> </ul>		0,310 1	1	07110	00	0
	<ul style="list-style-type: none"> <li>• Bottom brass strap for left opening doors</li> <li>• AVAILABLE FINISHES: -chrome (Fin. 18)</li> </ul>		0,370 1	1	07111	00	2
	<ul style="list-style-type: none"> <li>• Bottom brass strap for right opening doors</li> <li>• AVAILABLE FINISHES: -chrome (Fin. 18)</li> </ul>		0,360 1	1	07112	00	1
	<ul style="list-style-type: none"> <li>• Top brass hinge for single leaf doors</li> <li>• AVAILABLE FINISHES: -chrome (Fin. 18)</li> </ul>		0,580 1	1	07113	00	0
	<ul style="list-style-type: none"> <li>• Top aluminium hinge for swinging doors</li> </ul>		0,190 1	1	07115	00	0
	<ul style="list-style-type: none"> <li>• Satin brass cover plate</li> <li>• ON REQUEST:</li> <li>• Personalised trademark</li> </ul>		0,380 1	1	07123	00	0
	<ul style="list-style-type: none"> <li>• Satin stainless steel cover plate</li> <li>• ON REQUEST:</li> <li>• Personalised trademark</li> </ul>		0,380 1	1	07124	00	0
	<ul style="list-style-type: none"> <li>• Lacquered steel wall case</li> </ul>		1,050 1	1	07124	50	0



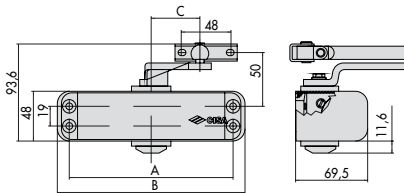
60250, 60251, 60252, 60260, 60261, 60262



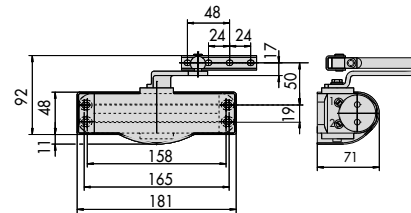
	A		A
1.60517.03	205	1.60537.03	205
1.60517.04	225	1.60537.04	225
1.60517.05	225	1.60537.05	225
1.60518.03	205	1.60557.03	225
1.60518.04	225	1.60557.05	225
1.60518.05	225	1.60538.03	225
1.60527.03	205	1.60538.05	225
1.60527.04	225	1.60567.03	225
1.60527.05	225	1.60567.05	225
1.60528.03	205	1.60568.03	225
1.60528.04	225	1.60568.05	225
1.60528.05	225	1.60577.03	225
		1.60577.05	225

1

4



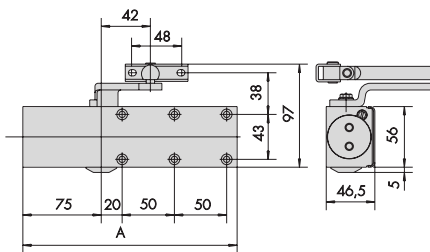
	A	B	C
1.60410.04	198	221	54
1.60411.04	198	221	54
1.60410.05	198	221	54
1.60411.05	198	221	54



71410, 71411, 71412

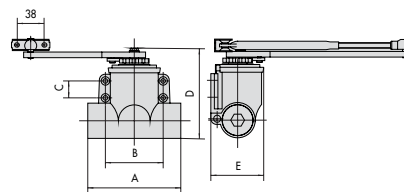
2

5



	A		A		A
1.60510.02	205	1.60520.02	205	1.60551.03	225
1.60510.03	205	1.60520.03	205	1.60551.05	225
1.60510.04	225	1.60520.04	225	1.60560.03	225
1.60510.05	225	1.60520.05	225	1.60560.05	225
1.60510.13	205	1.60521.02	205	1.60561.03	225
1.60510.14	225	1.60521.03	205	1.60561.05	225
1.60511.02	205	1.60521.04	225	1.60570.03	225
1.60511.03	205	1.60521.05	225	1.60570.05	225
1.60511.04	225	1.60530.02	205		
1.60511.05	225	1.60530.03	205		
1.60511.13	205	1.60530.04	225		
1.60511.14	225	1.60530.05	225		
		1.60550.03	225		
		1.60550.05	225		

3



	A	B	C	D	E
1.60130.01	132	75,5	19	144	68
1.60131.01	132	75,5	19	144	68
1.60140.02	137	82	24	124	73
1.60141.02	137	82	24	124	73
1.60150.03	147	92	29	140	81
1.60151.03	147	92	29	140	81
1.60160.04	150	105	31	156	96
1.60161.04	150	105	31	156	96

6